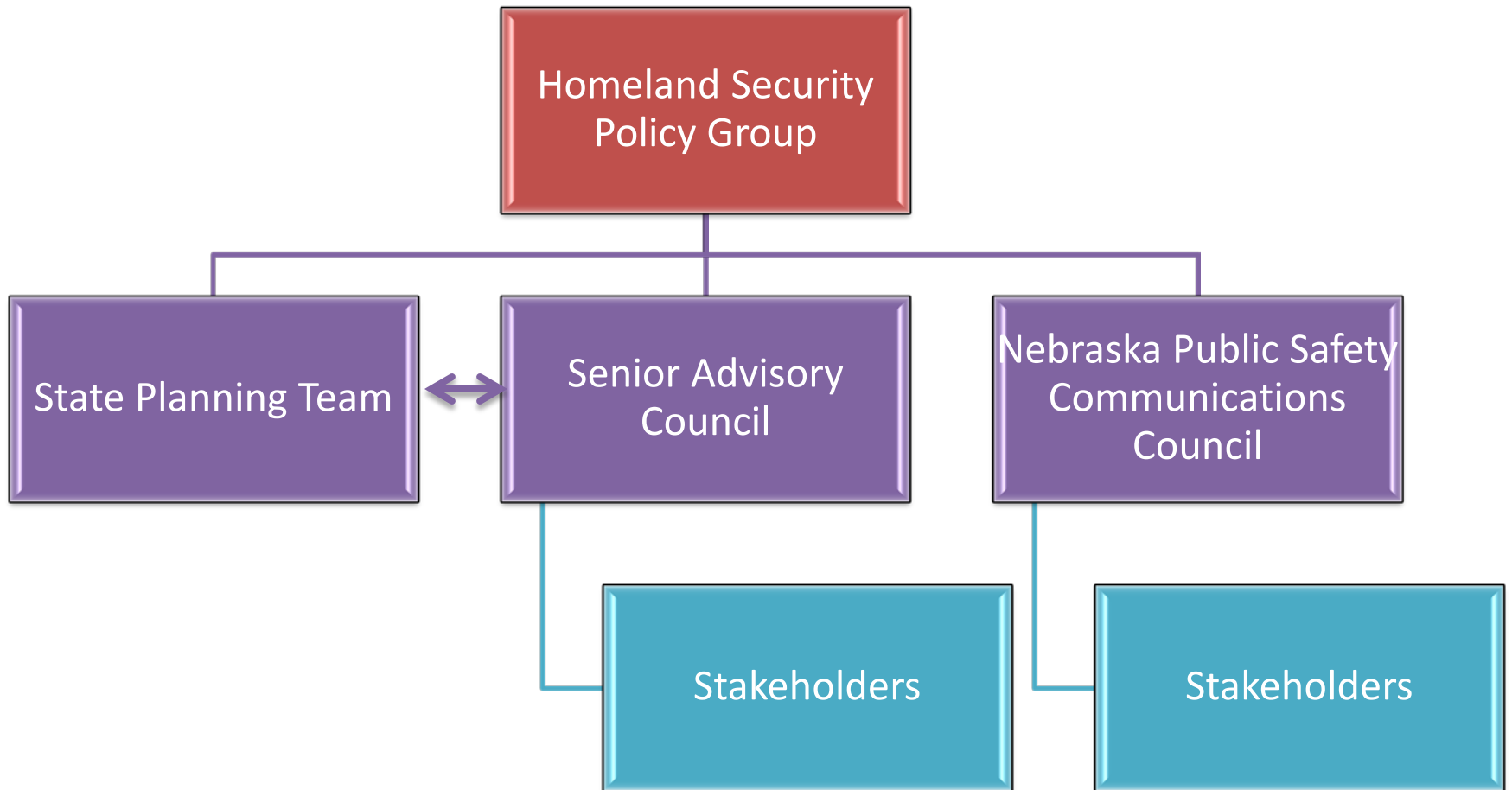
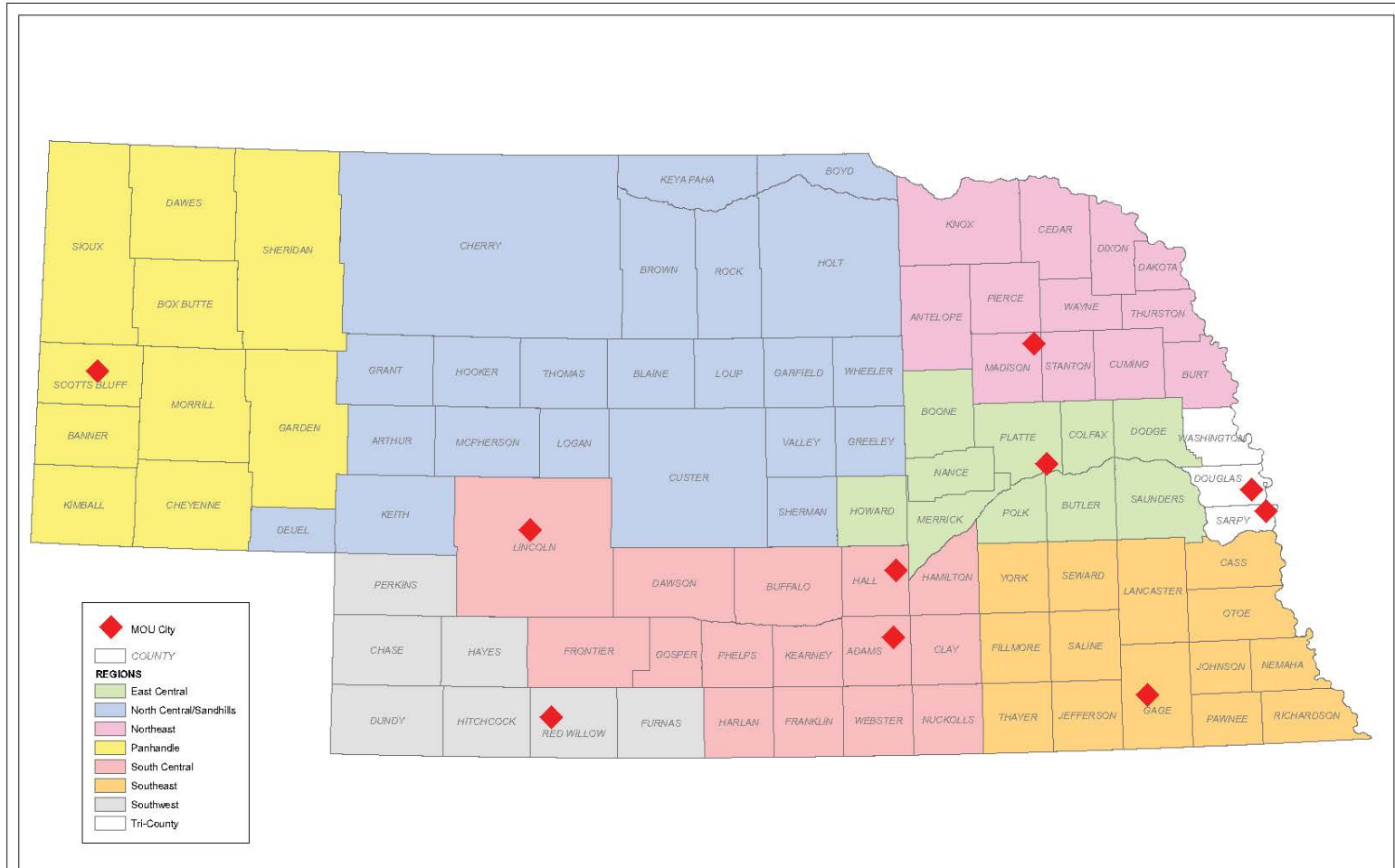


# Coordination – State Structures



# Coordination – PET Regions



Nebraska Emergency Management Agency  
 1300 Military Road  
 Lincoln, NE 68508  
 (402) 471-1242  
 SEOC (Toll Free) 1-877-297-2368



## MOU Regional PET - Communications

0 10 20 40 Miles



Data Source: NEMA  
 Date: October 2008

# State Homeland Security Strategy

- State Priority Areas (Goals are at IJ Tables)
  - PET
  - Interoperable communications
  - Law enforcement intelligence sharing
  - MMRS and MRC
  - HazMat response
  - AG preparedness & LEDRS
  - Information sharing for CIKR
  - State Citizen Corps
  - State level grant administration